

ESU COURSE ON RECENT DEVELOPMENTS IN DIAGNOSIS AND TREATMENT OF BLADDER CANCER

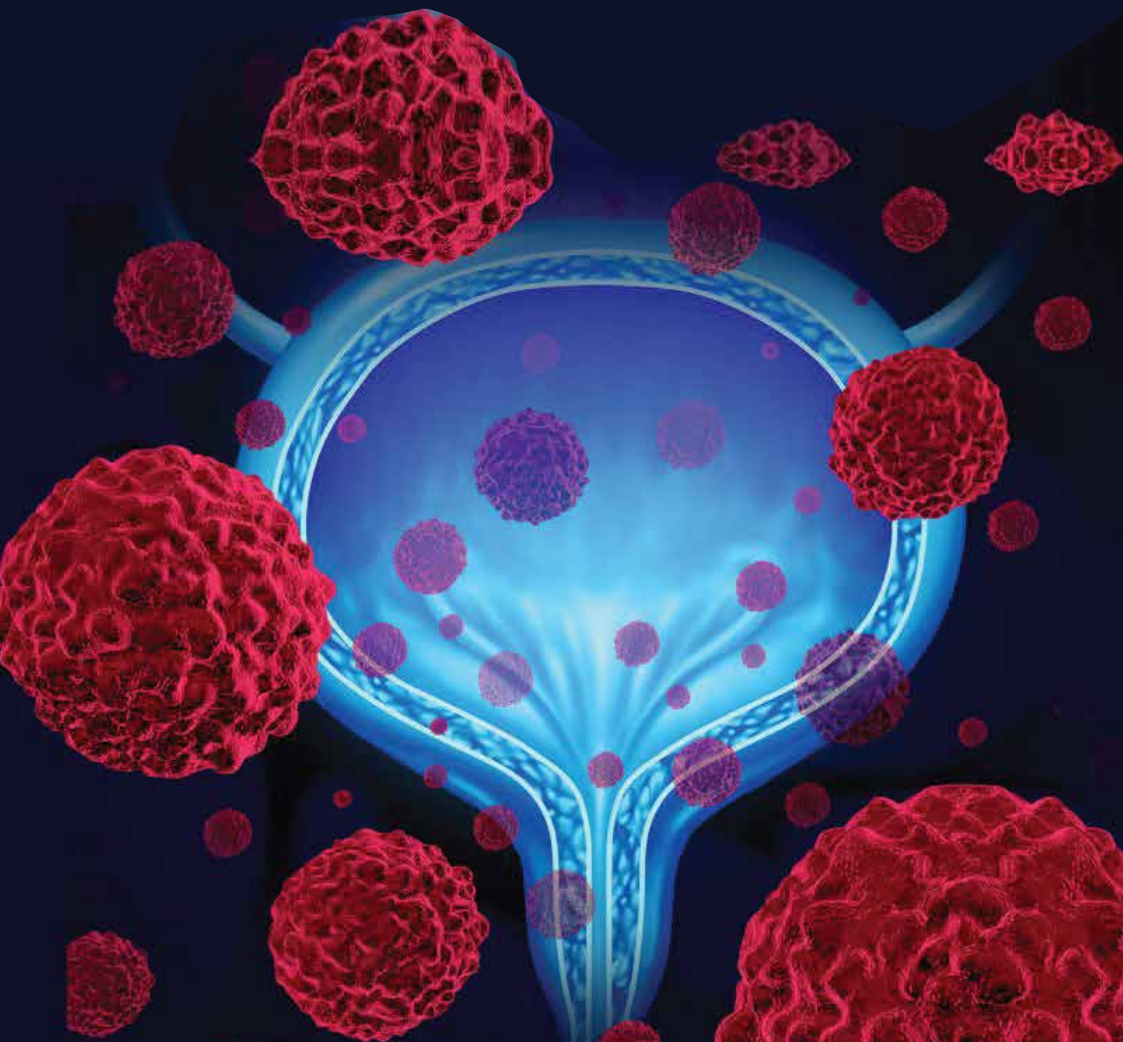


LEBANESE UROLOGY SOCIETY
الجمعية اللبنانية للمسالك البولية

OCTOBER 28, 2017
MONROE HOTEL, BEIRUT - LEBANON



European
School of
Urology



SCIENTIFIC PROGRAM

08:30 - 08:55	Registration	
08:55 - 09:00	Welcome Address by the LUS President	Walid Alame
09:00 - 12:30 Morning Session		
Moderators: Khalil Armashe, Maroun Serhal, Guy Hokayem		
09:00 - 09:05	European School of Urology: A Unique Possibility for Urological Education	Paolo Gontero <i>Turin (IT)</i>
09:05 - 09:20	EAU Guidelines Recommendations on NMIBC and MIBC	Paolo Gontero <i>Turin (IT)</i>
09:20 - 09:40	Staging and Grading in 2017	Kilian Gust <i>Vienna (AT)</i>
09:40 - 09:55	Diagnosis in Bladder Cancer: Optical, Cytology and Markers	Paolo Gontero <i>Turin (IT)</i>
09:55 - 10:10	TURBT and re-TUR: Indications and Tricks	Kilian Gust <i>Vienna (AT)</i>
10:10 - 10:25	Discussion	
10:25 - 10:55 COFFEE BREAK		
10:55 - 11:15	Treatment According to Risk Stratification	Paolo Gontero <i>Turin (IT)</i>
11:15 - 12:30	Interactive Case Discussions on Non-Invasive Bladder Cancer Presenters: ESU Faculty - Raghid Khoury, <i>Beirut (LB)</i> - Georges Assaf, <i>Beirut (LB)</i>	
12:30 - 13:30 LUNCH BREAK		
13:30 - 17:00 Afternoon Session		
Moderators: Nazih Youssef, Ali Salloum, Fadi Saadeh		
13:30 - 14:00	Radical Surgery in MIBC: Preparation and Surgical Tricks	Paolo Gontero <i>Turin (IT)</i>
14:00 - 14:30	Chemotherapy and Immunotherapy in Advanced and Metastatic Bladder Cancer	Kilian Gust <i>Vienna (AT)</i>
14:30 - 15:00	Management of Complications in Bladder Cancer	Paolo Gontero <i>Turin (IT)</i>
15:00 - 15:15	Discussion	
15:15 - 15:35 COFFEE BREAK		
15:35 - 17:00	Interactive Case Discussions on Invasive Bladder Cancer Presenters: ESU Faculty - Mohamed Bulbul, <i>Beirut (LB)</i> - Maroun Moukarzel, <i>Beirut (LB)</i>	
17:00	ADJOURN	